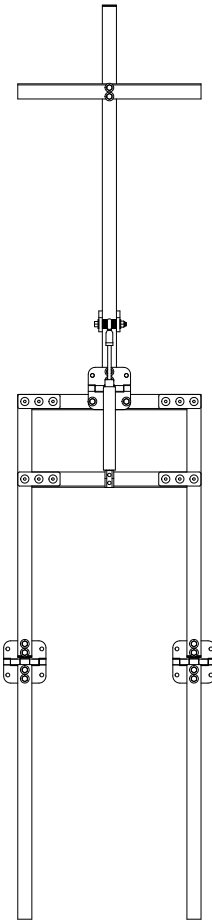


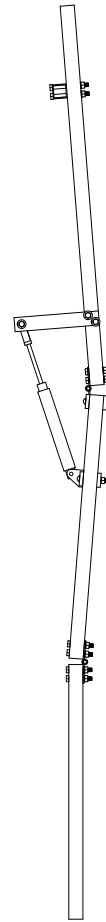
THRASHER MECHANISM

Use at own risk. Pandemic Haunt Production LLC dose not assume any responsibility for misuse, damages, injury or death from this design. Pneumatics, although relatively safe, can be dangerous if not used with caution. This mechanism is not designed for air pressure above 125 psi. This mechanism is not designed for commercial use. These plans are not to be copied, duplicated or distributed without approval from Pandemic Haunt Production LLC. If there are any questions, please feel free to e-mail us at Dave@PandemicHauntProduction.com

www.PandemicHauntProduction.com



FRONT VIEW



SIDE VIEW

ENLARGED VIEW
This view is of the upper section of the Thrasher. Were the shoulders would be.

ENLARGED VIEW
This view is of the upper section of the Thrasher. Were the shoulders would be.

ZONE	REV	DESCRIPTION	DATE	APPROVED
------	-----	-------------	------	----------

THIS DRAWING CONTAINS
CONFIDENTIAL INFORMATION
AND IS ISSUED IN CONFIDENCE
THAT IT NOT BE COPIED,
REPRODUCED, DISCLOSED TO
OTHERS OR USED IN
MANUFACTURE OF THE SUBJECT
MATTER THEREOF WITHOUT
WRITTEN CONSENT OF
PANDEMIC HAUNT PRODUCTION

Pandemic Haunt Production LLC

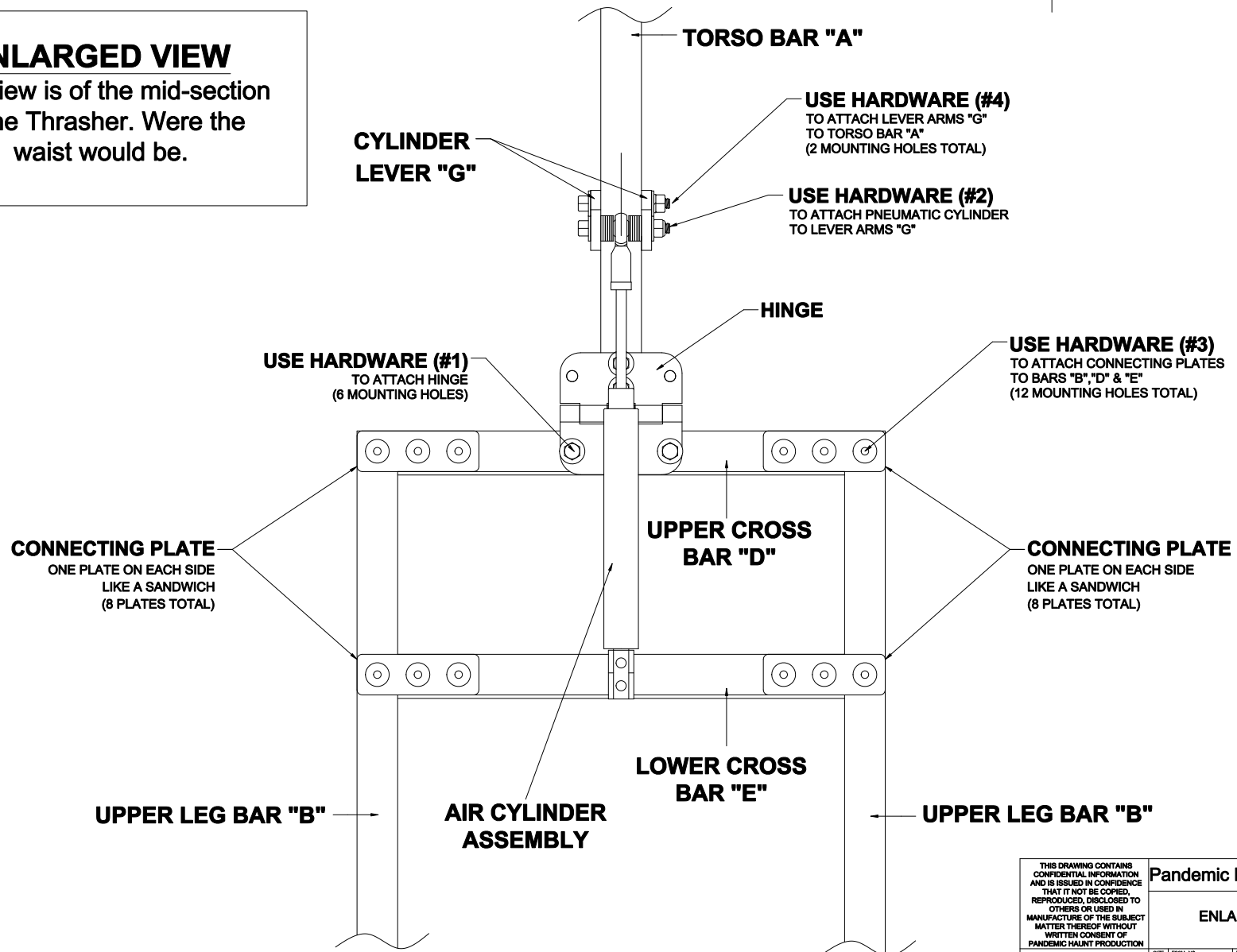
ENLARGED VIEW "A"

SIZE	FSCM NO.	DWG NO.

REV
1

ENLARGED VIEW

This view is of the mid-section of the Thrasher. Were the waist would be.

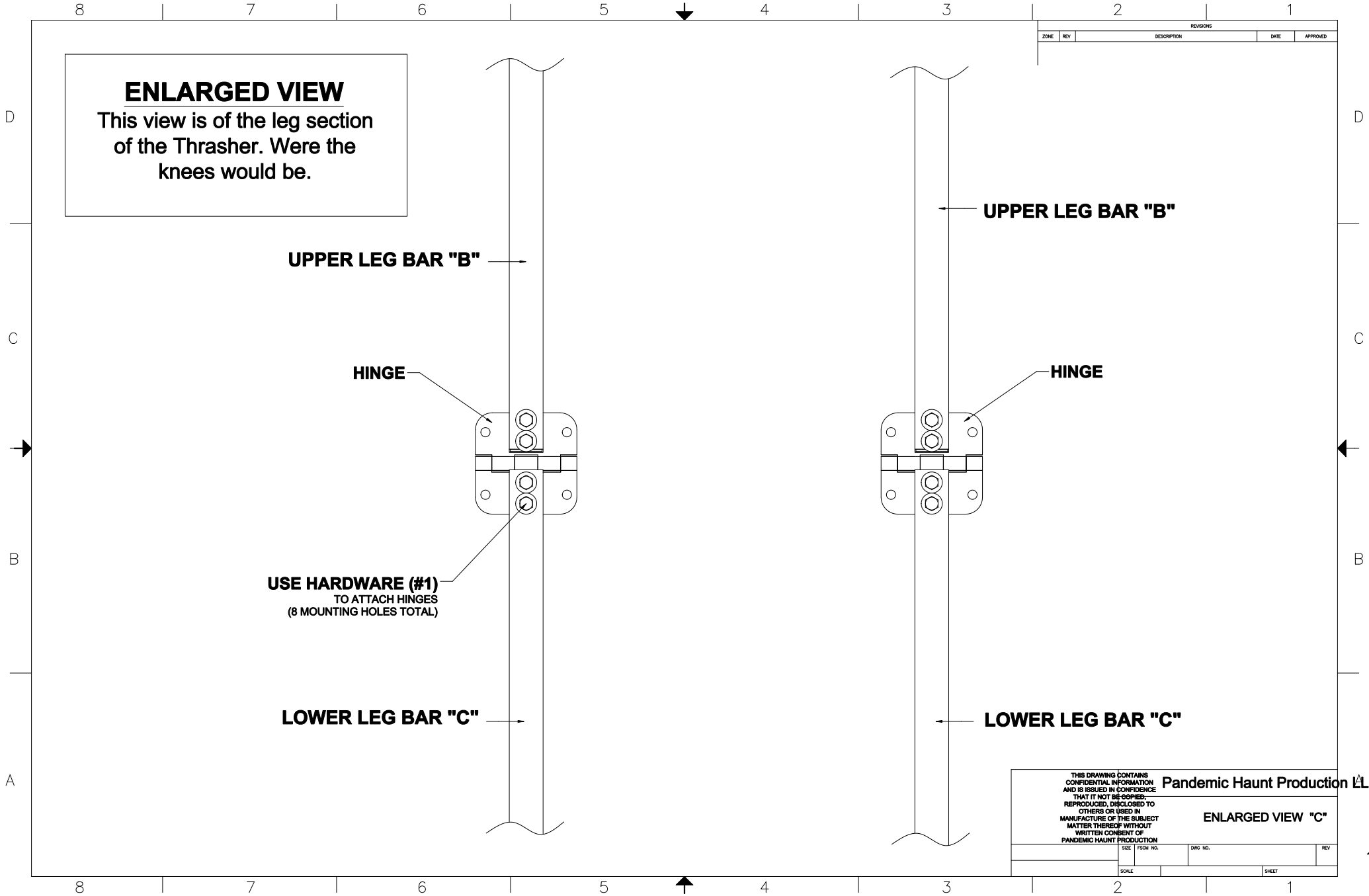


THIS DRAWING CONTAINS
CONFIDENTIAL INFORMATION
AND IS ISSUED IN CONFIDENCE
THAT IT NOT BE COPIED,
REPRODUCED, DISCLOSED TO
OTHERS OR USED IN
MANUFACTURE OF THE SUBJECT
MATTER THEREOF WITHOUT
WRITTEN CONSENT OF
PANDEMIC HAUNT PRODUCTION

Pandemic Haunt Production LLC

ENLARGED VIEW "B"

SIZE	FSCM NO.	DWG NO.	REV
			1
SCALE		SHEET	



ENLARGED VIEW
This view is of the leg section
of the Thrasher. Were the
knees would be.

UPPER LEG BAR "B"

HINGE

USE HARDWARE (#1)
TO ATTACH HINGES
(8 MOUNTING HOLES TOTAL)

LOWER LEG BAR "C"

UPPER LEG BAR "B"

HINGE

LOWER LEG BAR "C"

THIS DRAWING CONTAINS
CONFIDENTIAL INFORMATION
AND IS ISSUED IN CONFIDENCE
THAT IT NOT BE COPIED,
REPRODUCED, DISCLOSED TO
OTHERS OR USED IN
MANUFACTURE OF THE SUBJECT
MATTER THEREOF WITHOUT
WRITTEN CONSENT OF
PANDEMIC HAUNT PRODUCTION

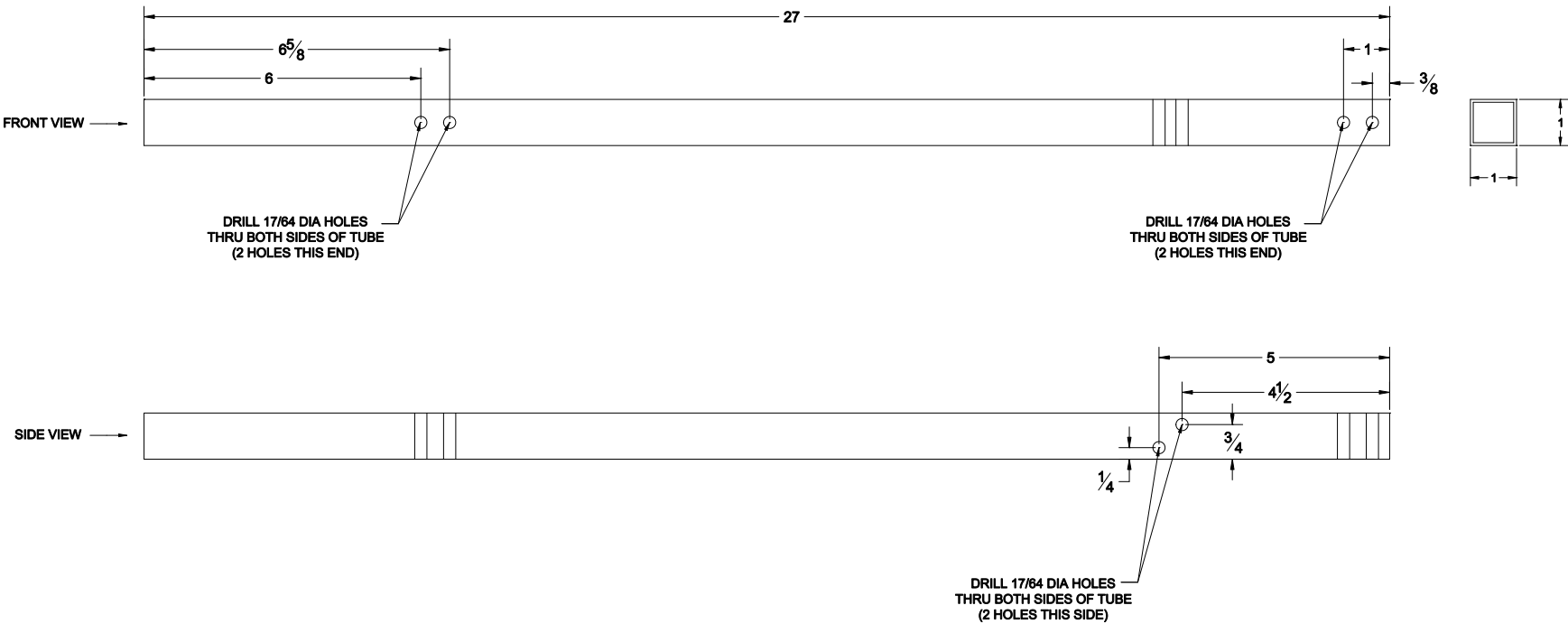
Pandemic Haunt Production LLC

ENLARGED VIEW "C"

SIZE	TSCM NO.	DWG NO.	REV
SCALE		SHEET	

A

(NEED 1)

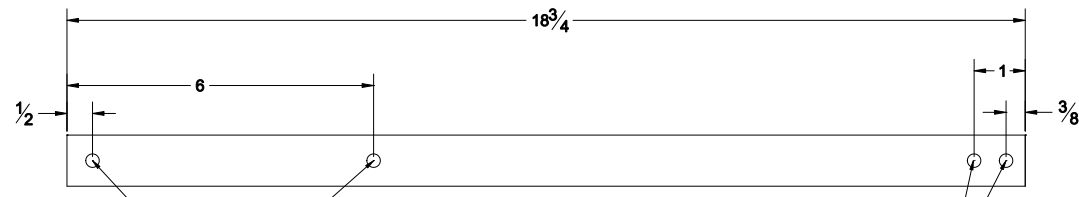


This part is made from:
1in X 1in X 1/16 wall thickness
SQUARE TUBE ALUMINUM

THIS DRAWING CONTAINS CONFIDENTIAL INFORMATION AND IS ISSUED IN CONFIDENCE THAT IT NOT BE COPIED, REPRODUCED, DISCLOSED TO OTHERS OR USED IN MANUFACTURE OF THE SUBJECT MATTER THEREOF WITHOUT WRITTEN CONSENT OF PANDEMIC HAUNT PRODUCTION				Pandemic Haunt Production LLC			
				TORSO BAR "A"			
SIZE	FSCM NO.	DWG NO.	REV	SCALE	SHEET		
			1				

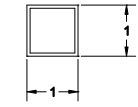
B

(NEED 2)



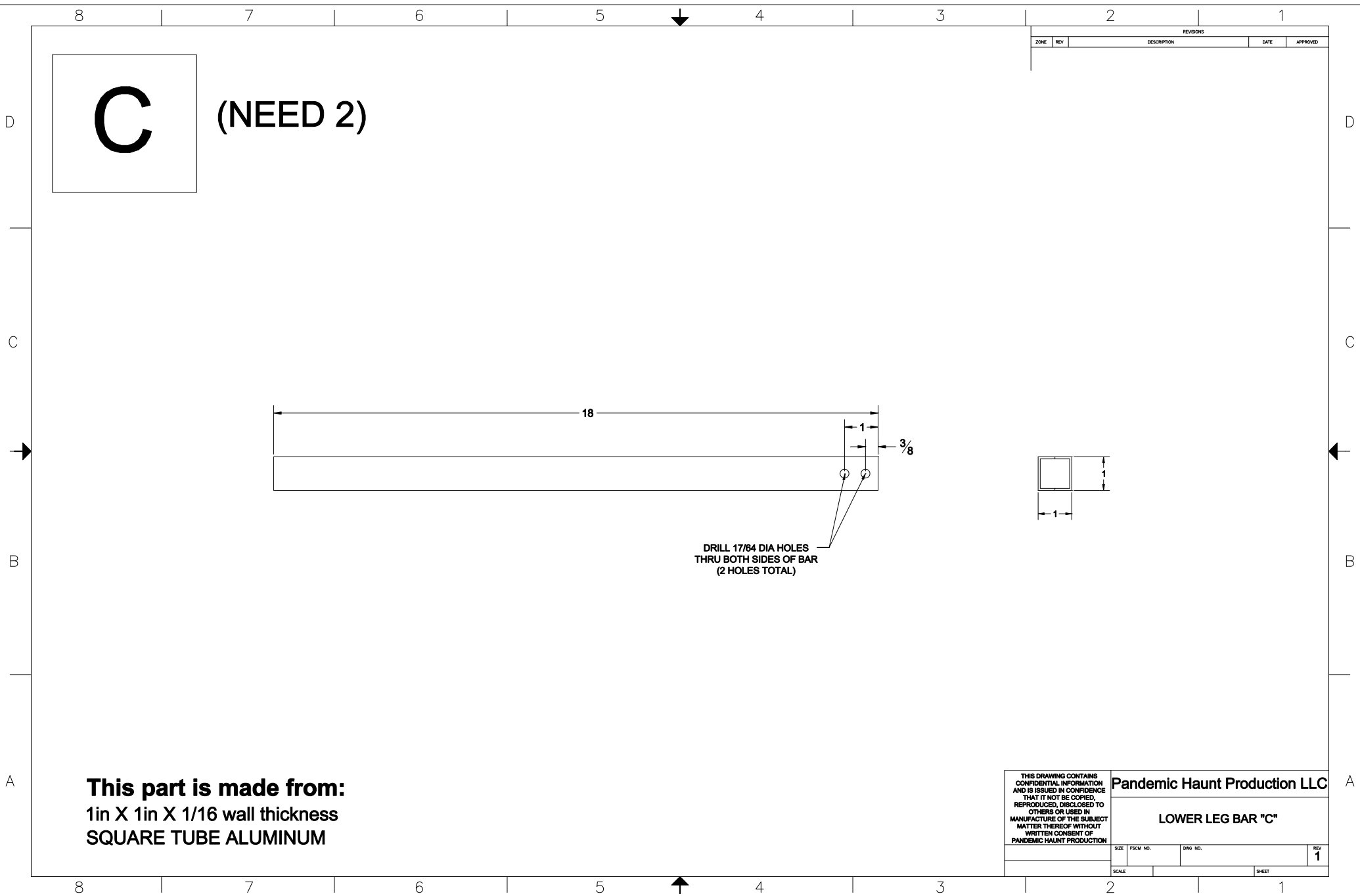
DRILL 17/64 DIA HOLES
THRU BOTH SIDES OF BAR
(2 HOLES THIS END)

DRILL 17/64 DIA HOLES
THRU BOTH SIDES OF TUBE
(2 HOLES THIS END)



This part is made from:
1in X 1in X 1/16 wall thickness
SQUARE TUBE ALUMINUM

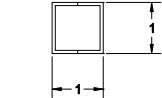
THIS DRAWING CONTAINS CONFIDENTIAL INFORMATION AND IS ISSUED IN CONFIDENCE THAT IT NOT BE COPIED, REPRODUCED, DISCLOSED TO OTHERS OR USED IN MANUFACTURE OF THE SUBJECT MATTER THEREOF WITHOUT WRITTEN CONSENT OF PANDEMIC HAUNT PRODUCTION				Pandemic Haunt Production LLC			
				UPPER LEG BAR "B"			
SIZE	FSCM NO.	DWG NO.		REV	1		
SCALE		SHEET					



C (NEED 2)

This part is made from:
1in X 1in X 1/16 wall thickness
SQUARE TUBE ALUMINUM

ZONE		REV	DESCRIPTION		DATE	APPROVED

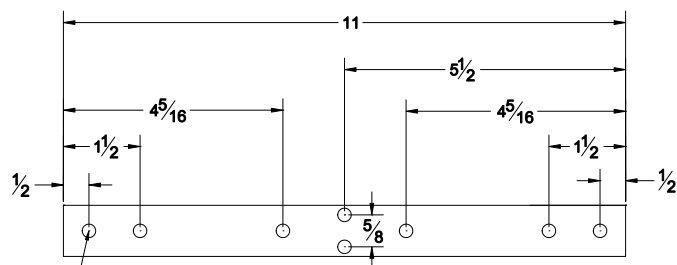


DRILL 17/64 DIA HOLES
THRU BOTH SIDES OF BAR
(2 HOLES TOTAL)

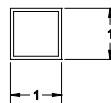
THIS DRAWING CONTAINS CONFIDENTIAL INFORMATION AND IS ISSUED IN CONFIDENCE THAT IT NOT BE COPIED, REPRODUCED, DISCLOSED TO OTHERS OR USED IN MANUFACTURE OF THE SUBJECT MATTER THEREOF WITHOUT WRITTEN CONSENT OF PANDEMIC HAUNT PRODUCTION			Pandemic Haunt Production LLC				
			LOWER LEG BAR "C"				
			SIZE	FSCM NO.	DWG NO.	REV	1
			SCALE		SHEET		

D

(NEED 1)



DRILL 17/64 DIA HOLES
THRU BOTH SIDES OF BAR
(8 HOLES TOTAL)

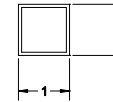
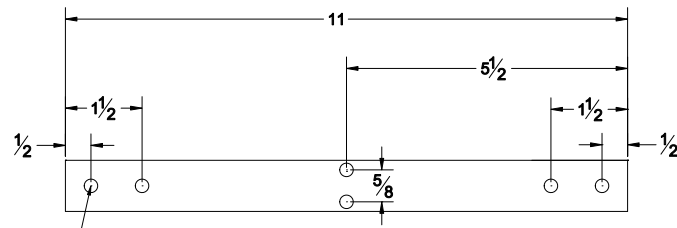


This part is made from:
1in X 1in X 1/16 wall thickness
SQUARE TUBE ALUMINUM

THIS DRAWING CONTAINS CONFIDENTIAL INFORMATION AND IS ISSUED IN CONFIDENCE THAT IT NOT BE COPIED, REPRODUCED, DISCLOSED TO OTHERS OR USED IN MANUFACTURE OF THE SUBJECT MATTER THEREOF WITHOUT WRITTEN CONSENT OF PANDEMIC HAUNT PRODUCTION				Pandemic Haunt Production LLC			
				UPPER CROSS BAR "D"			
SIZE		FSCM NO.		DWG NO.		REV	
						1	
SCALE				SHEET			

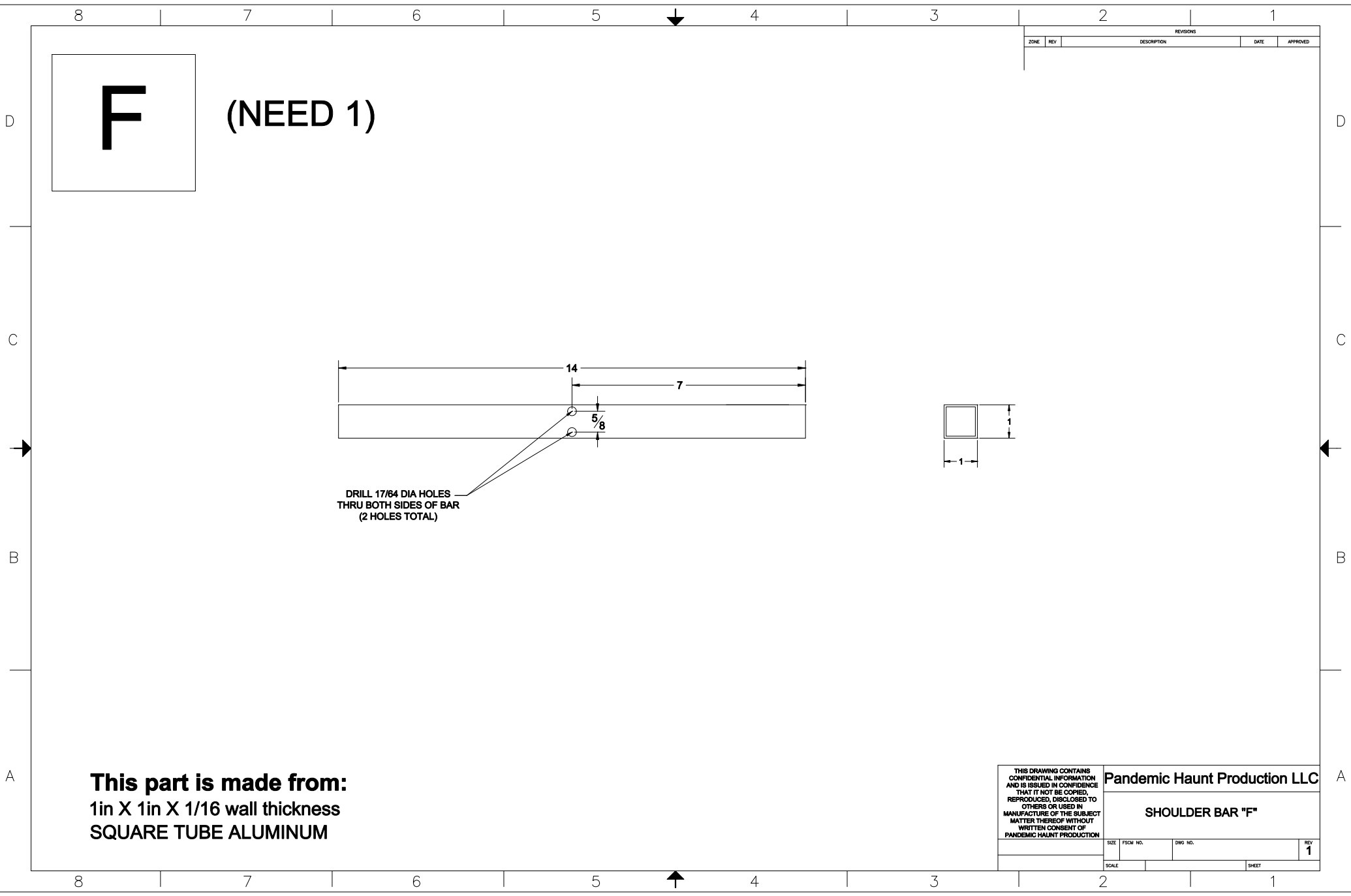
E

(NEED 1)



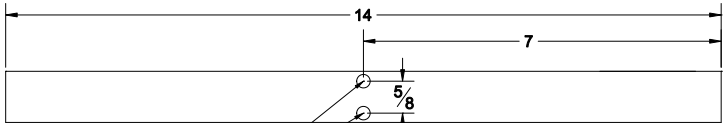
This part is made from:
1in X 1in X 1/16 wall thickness
SQUARE TUBE ALUMINUM

THIS DRAWING CONTAINS CONFIDENTIAL INFORMATION AND IS ISSUED IN CONFIDENCE THAT IT NOT BE COPIED, REPRODUCED, DISCLOSED TO OTHERS OR USED IN MANUFACTURE OF THE SUBJECT MATTER THEREOF WITHOUT WRITTEN CONSENT OF PANDEMIC HAUNT PRODUCTION	Pandemic Haunt Production LLC			
	LOWER CROSS BAR "E"			
	SIZE	FSCM NO.	DWG NO.	REV 1
	SCALE			SHEET

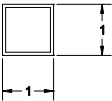


F

(NEED 1)



DRILL 17/64 DIA HOLES
THRU BOTH SIDES OF BAR
(2 HOLES TOTAL)



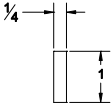
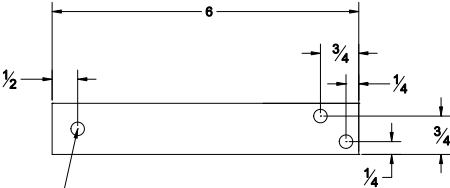
THIS DRAWING CONTAINS CONFIDENTIAL INFORMATION AND IS ISSUED IN CONFIDENCE THAT IT NOT BE COPIED, REPRODUCED, DISCLOSED TO OTHERS OR USED IN MANUFACTURE OF THE SUBJECT MATTER THEREOF WITHOUT WRITTEN CONSENT OF PANDEMIC HAUNT PRODUCTION			Pandemic Haunt Production LLC				
			SHOULDER BAR "F"				
			SIZE	FSCM NO.	DWG NO.	REV	1
			SCALE			SHEET	

This part is made from:
1in X 1in X 1/16 wall thickness
SQUARE TUBE ALUMINUM

G

(NEED 2)

DRILL 17/64 DIA HOLES
(3 HOLES TOTAL)

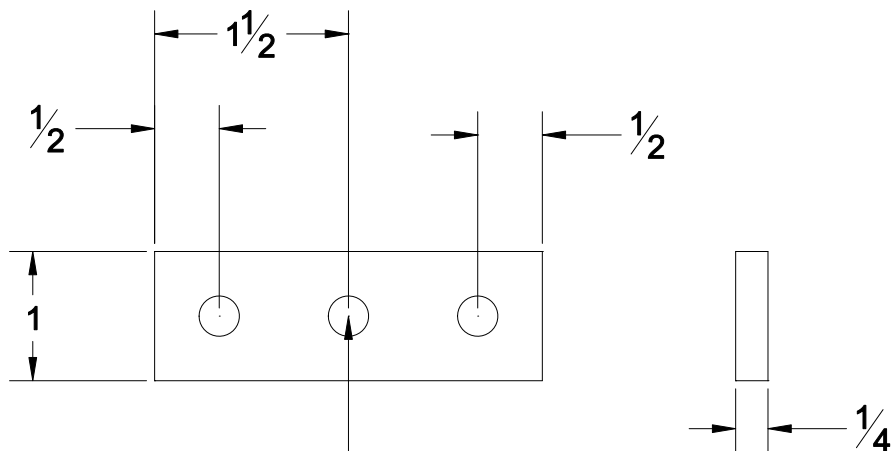


This part is made from:
1in X 1/4in
FLAT STOCK ALUMINUM

THIS DRAWING CONTAINS CONFIDENTIAL INFORMATION AND IS ISSUED IN CONFIDENCE THAT IT NOT BE COPIED, REPRODUCED, DISCLOSED TO OTHERS OR USED IN MANUFACTURE OF THE SUBJECT MATTER THEREOF WITHOUT WRITTEN CONSENT OF PANDEMIC HAUNT PRODUCTION				Pandemic Haunt Production LLC					
				CYLINDER LEVER "G"					
				SIZE	FSCM NO.	DWG NO.		REV	1
				SCALE				SHEET	

CONNECTING PLATES

(NEED 8 pcs)



DRILL 5/16 DIA HOLES
THRU PLATE
(3 HOLES)

This part is made from:
1in X 1/4in
FLAT STOCK ALUMINUM

THIS DRAWING CONTAINS CONFIDENTIAL INFORMATION AND IS ISSUED IN CONFIDENCE THAT IT NOT BE COPIED, REPRODUCED, DISCLOSED TO OTHERS OR USED IN MANUFACTURE OF THE SUBJECT MATTER THEREOF WITHOUT WRITTEN CONSENT OF PANDEMIC HAUNT PRODUCTION				Pandemic Haunt Production LLC			
				VERTICAL CONNECTING PLATES			
SIZE		FSCM NO.		DWG NO.		REV	
						1	
SCALE				SHEET			

AIR CYLINDER ASSEMBLY

PIVOT BRACKET

ONE PIECE WITH PIN
1/4 Hole with 3/8 Opening
SKU # 0776-0380
(FRIGHTPROPS.COM)

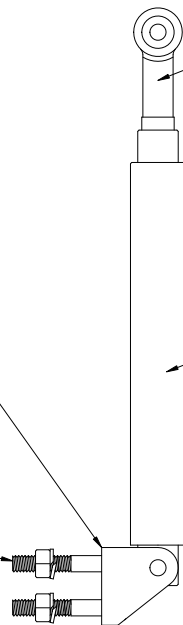
SPHERICAL ROD END

1/4-28 THREAD
SKU# 0582-0022
(FRIGHTPROPS.COM)

CYLINDER

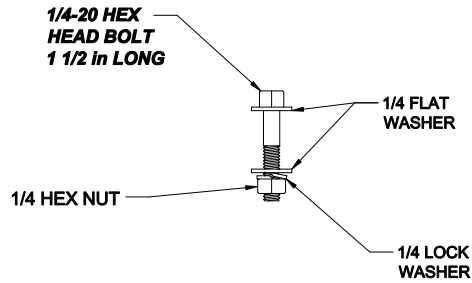
3/4 BORE
3" STROKE
DOUBLE ACTING
UNIVERSAL MOUNT
SKU # 0758-0750-3
(FRIGHTPROPS.COM)

USE HARDWARE (#5)
TO ATTACH FOOT BRACKETS TO
LOWER CROSS BAR "E"

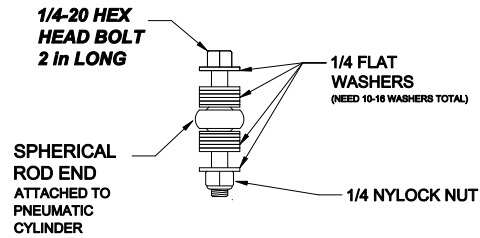


THIS DRAWING CONTAINS CONFIDENTIAL INFORMATION AND IS ISSUED IN CONFIDENCE THAT IT NOT BE COPIED, REPRODUCED, DISCLOSED TO OTHERS OR USED IN MANUFACTURE OF THE SUBJECT MATTER THEREOF WITHOUT WRITTEN CONSENT OF PANDEMIC HAUNT PRODUCTION				Pandemic Haunt Production LLC			
				AIR CYLINDER ASSEMBLY			
SIZE	FSCM NO.	DWG NO.	REV	SCALE	SHEET		
			1				

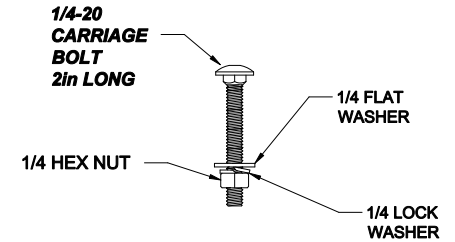
HARDWARE (#1) (NEED 14)



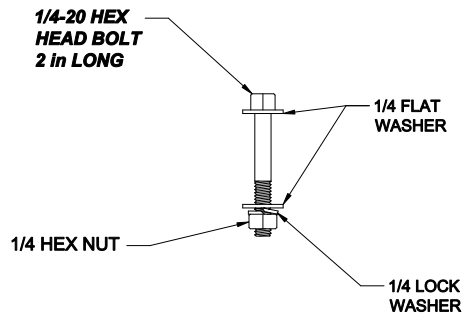
HARDWARE (#2) (Need 1)



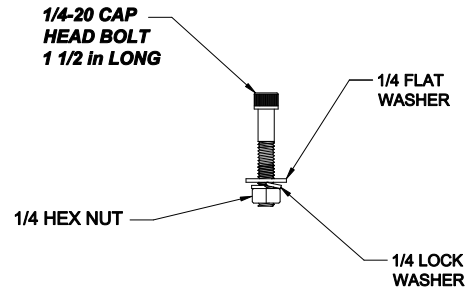
HARDWARE (#3) (NEED 12)



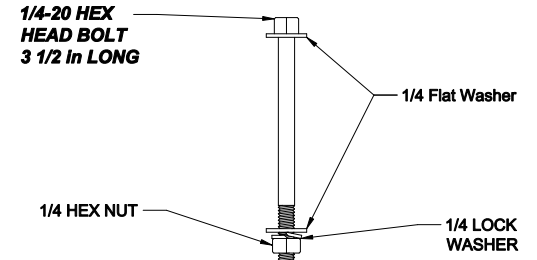
HARDWARE (#4) (NEED 2)



HARDWARE (#5) (NEED 2)



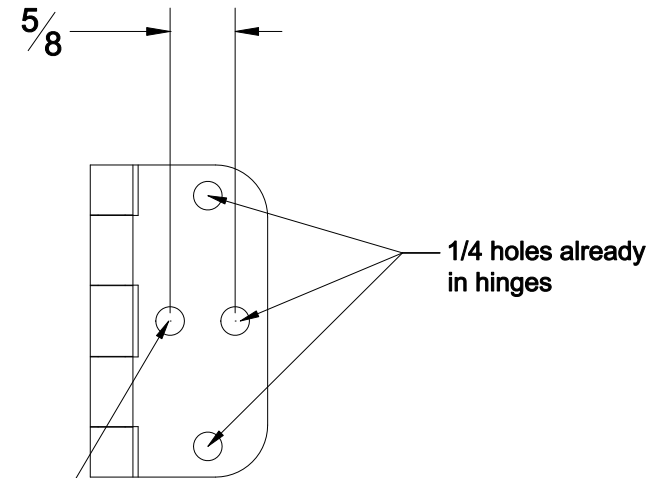
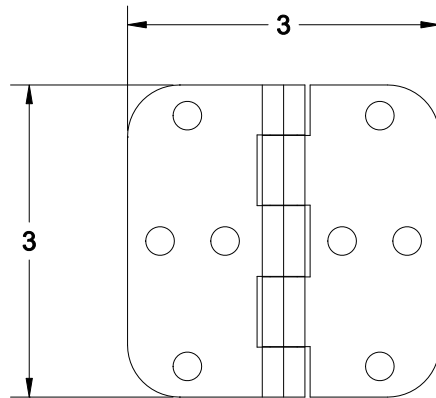
HARDWARE (#6) (NEED 2)



THIS DRAWING CONTAINS CONFIDENTIAL INFORMATION AND IS ISSUED IN CONFIDENCE THAT IT NOT BE COPIED, REPRODUCED, DISCLOSED TO OTHERS OR USED IN MANUFACTURE OF THE SUBJECT MATTER THEREOF WITHOUT WRITTEN CONSENT OF PANDEMIC HAUNT PRODUCTION				Pandemic Haunt Production LLC			
HARDWARE				REV 1			
SIZE	FSCM NO.	DWG NO.					
SCALE				SHEET			

HINGE DESCRIPTION

Here is the basic description of the 3 in hinges that were used in these plans. It may be hard to find these exact hinges, but you should be able to find hinges that closely match the overall length and width of the description. Try to use the strongest steel hinge you can find in this size. It is not a problem if the style different.



Drill 1/4 hole in this position.
(both sides of hinge)

THIS DRAWING CONTAINS CONFIDENTIAL INFORMATION AND IS ISSUED IN CONFIDENCE THAT IT NOT BE COPIED, REPRODUCED, DISCLOSED TO OTHERS OR USED IN MANUFACTURE OF THE SUBJECT MATTER THEREOF WITHOUT WRITTEN CONSENT OF PANDEMIC HAUNT PRODUCTION		Pandemic Haunt Production LLC	
		HINGE DESCRIPTION	
SIZE	FSCM NO.	DWG NO.	REV
			1
SCALE		SHEET	