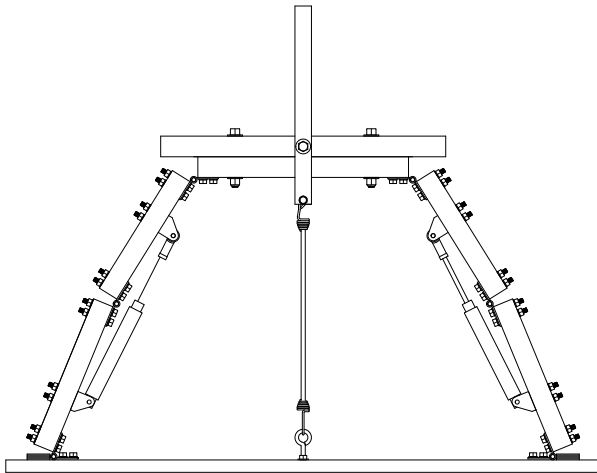


# ***GROUND BREAKER MECHANISM***

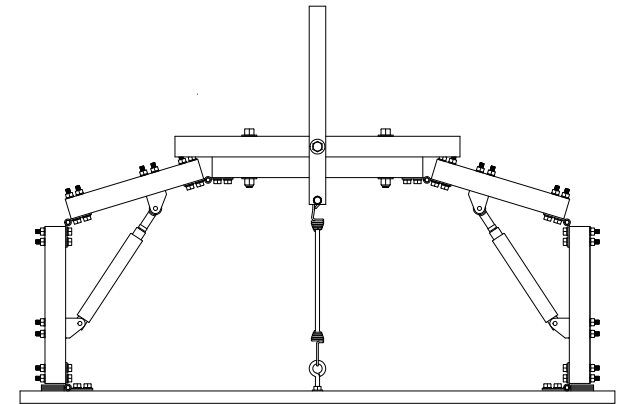
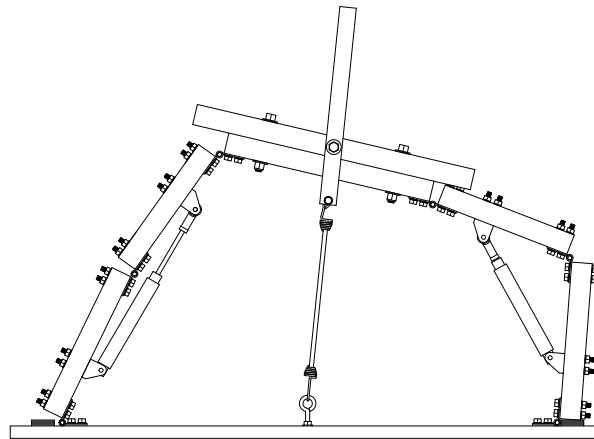
Use at own risk. Pandemic Haunt Production LLC does not assume any responsibility for misuse, damages, injury or death from this design. Pneumatics, although relatively safe, can be dangerous if not used with caution. This mechanism is not designed for air pressure above 125 psi. This mechanism is not designed for commercial use. These plans are not to be copied, duplicated or distributed without approval from Pandemic Haunt Production LLC.

If there are any questions, please feel free to e-mail us at [Dave@PandemicHauntProduction.com](mailto:Dave@PandemicHauntProduction.com)

[www.PandemicHauntProduction.com](http://www.PandemicHauntProduction.com)



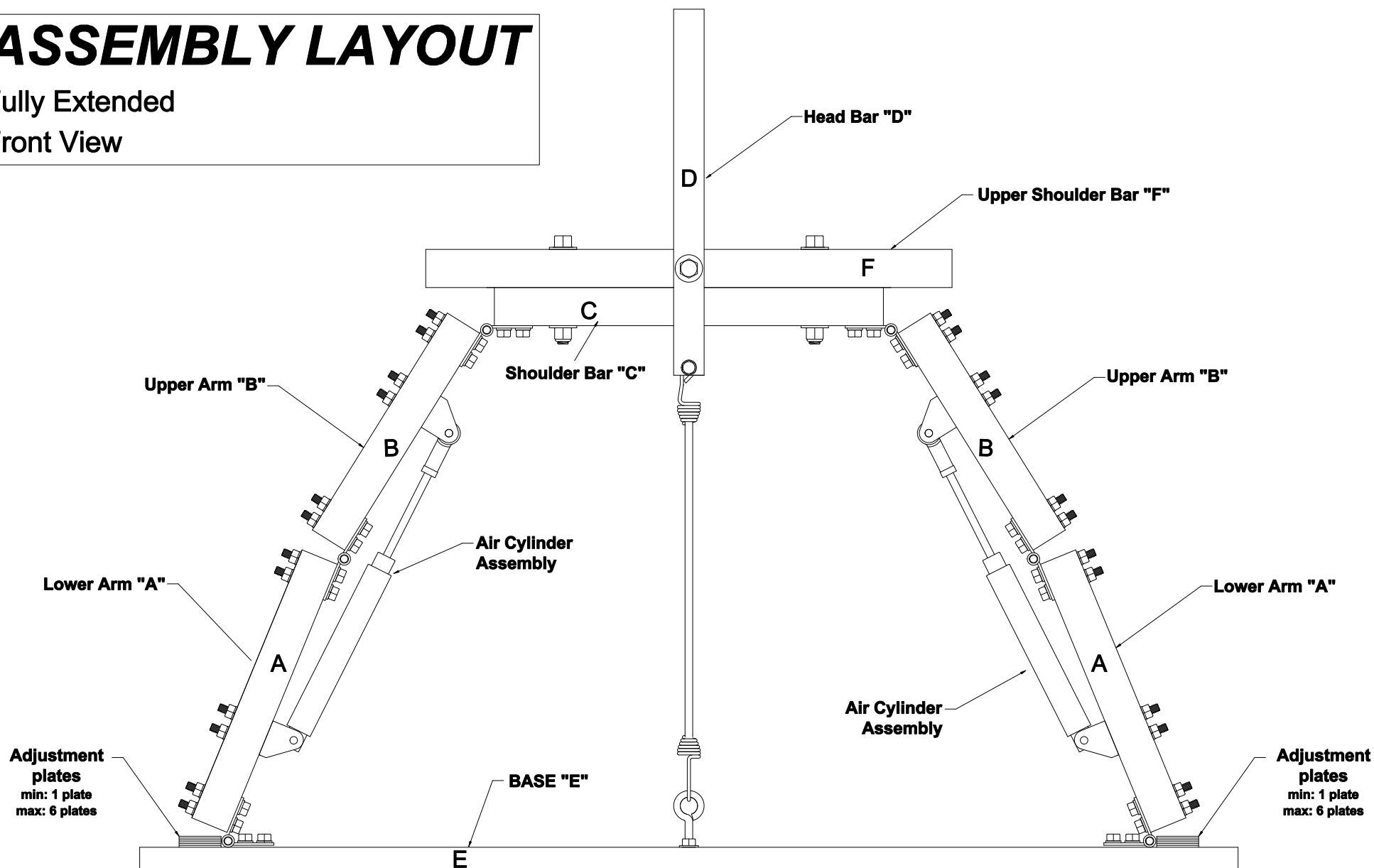
**FRONT VIEW  
FULLY  
EXTENDED**



**FRONT VIEW  
FULLY  
RETRACTED**

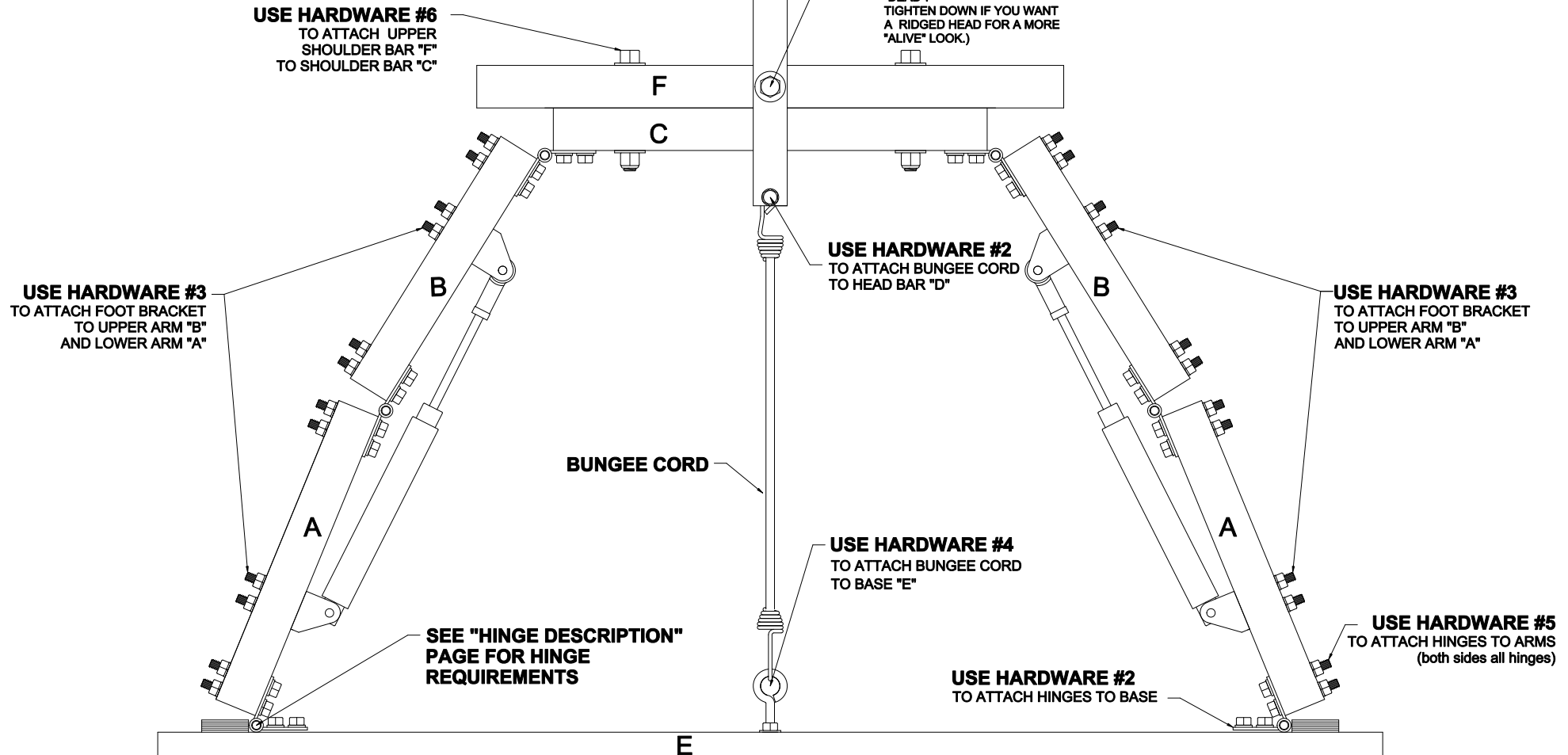
# ASSEMBLY LAYOUT

Fully Extended  
Front View



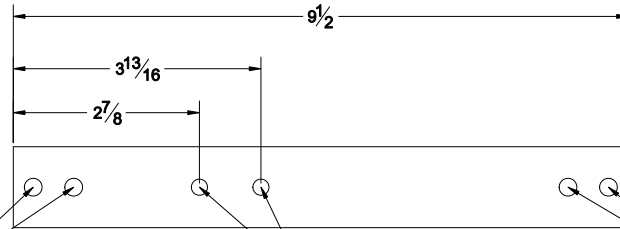
# HARDWARE LAYOUT

Fully Extended  
Front View



A

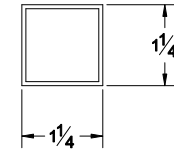
REVISIONS				DATE	APPROVED
ZONE	REV	DESCRIPTION			



DRILL 17/64 HOLE THRU BOTH SIDES OF TUBE. HOLE PLACEMENT TO MATCH UP WITH YOUR HINGES (2 HOLES THIS SIDE)

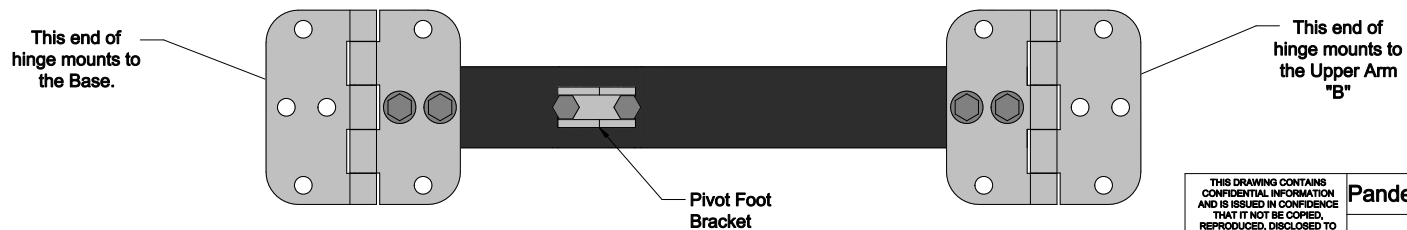
DRILL 17/64 HOLE THRU BOTH SIDES OF TUBE (2 HOLES)

DRILL 17/64 HOLE THRU BOTH SIDES OF TUBE. HOLE PLACEMENT TO MATCH UP WITH YOUR HINGES (2 HOLES THIS SIDE)



**This part is made from:**  
1 1/4in X 1 1/4in X 1/16 wall thickness  
SQUARE TUBE STEEL

### VIEW WITH HINGES AND PIVOT FOOT BRACKET ATTACHED



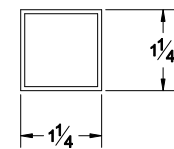
<small>THIS DRAWING CONTAINS CONFIDENTIAL INFORMATION AND IS ISSUED IN CONFIDENCE THAT IT NOT BE COPIED, REPRODUCED, DISCLOSED TO OTHERS OR USED IN MANUFACTURE OF THE SUBJECT MATTER THEREOF WITHOUT WRITTEN CONSENT OF PANDEMIC HAUNT PRODUCTION</small>				Pandemic Haunt Production LLC	
				Lower Arm "A"	
SIZE	FSCM NO.	DWG NO.	REV		
			1		
SCALE			SHEET		

B

DRILL 17/64 HOLE THRU  
BOTH SIDES OF TUBE.  
HOLE PLACEMENT TO  
MATCH UP WITH YOUR  
HINGES  
(2 HOLES THIS SIDE)

DRILL 17/64 HOLE THRU  
BOTH SIDES OF TUBE  
(2 HOLES)

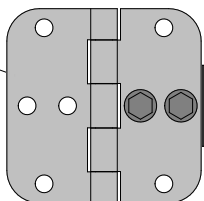
DRILL 17/64 HOLE THRU  
BOTH SIDES OF TUBE.  
HOLE PLACEMENT TO  
MATCH UP WITH YOUR  
HINGES  
(2 HOLES THIS SIDE)



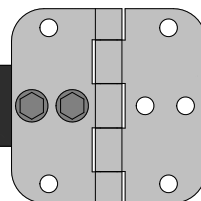
**This part is made from:**  
1 1/4in X 1 1/4in X 1/16 wall thickness  
SQUARE TUBE STEEL

**VIEW WITH HINGES AND PIVOT  
FOOT BRACKET ATTACHED**

This end of  
hinge mounts to  
Lower Arm "A"



Pivot Foot  
Bracket



This end of  
hinge mounts to  
the Top Bar "C"

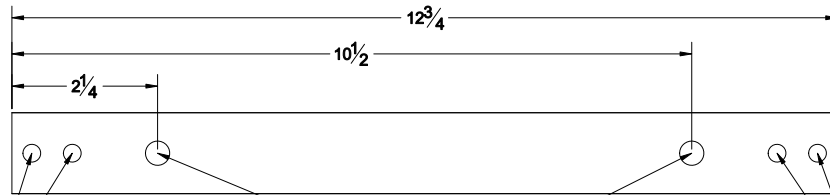
THIS DRAWING CONTAINS  
CONFIDENTIAL INFORMATION  
AND IS ISSUED IN CONFIDENCE  
THAT IT NOT BE COPIED,  
REPRODUCED, DISCLOSED TO  
OTHERS OR USED IN  
MANUFACTURE OF THE SUBJECT  
MATTER THEREOF WITHOUT  
WRITTEN CONSENT OF  
PANDEMIC HAUNT PRODUCTION

Pandemic Haunt Production LLC

Upper Arm "B"

SIZE	FSCM NO.	DWG NO.	REV
			1
SCALE		SHEET	

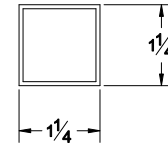
C



DRILL 17/64 HOLE THRU BOTH SIDES OF TUBE. HOLE PLACEMENT TO MATCH UP WITH YOUR HINGES (2 HOLES THIS SIDE)

DRILL 25/64 HOLE THRU BOTH SIDES OF TUBE (2 HOLES)

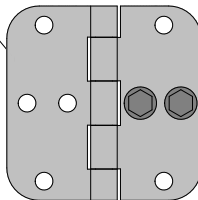
DRILL 17/64 HOLE THRU BOTH SIDES OF TUBE. HOLE PLACEMENT TO MATCH UP WITH YOUR HINGES (2 HOLES THIS SIDE)



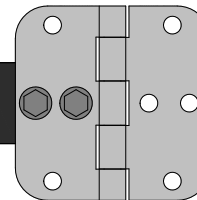
**This part is made from:**  
1 1/4in X 1 1/4in X 1/16 wall thickness  
SQUARE TUBE STEEL

### VIEW WITH HINGES ATTACHED

This end of hinge mounts to the Upper Arm "B"



This end of hinge mounts to the Upper Arm "B"



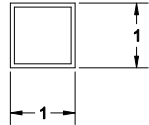
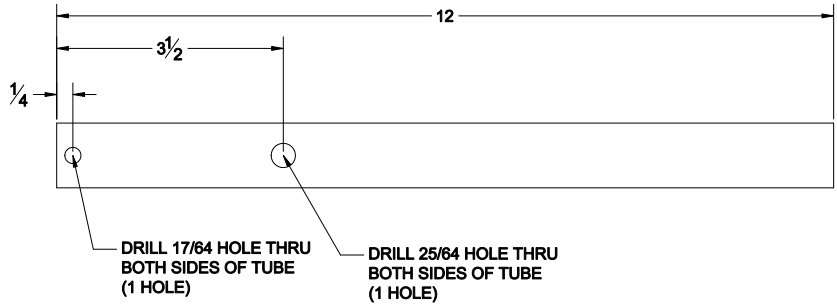
THIS DRAWING CONTAINS  
CONFIDENTIAL INFORMATION  
AND IS ISSUED IN CONFIDENCE  
THAT IT NOT BE COPIED,  
REPRODUCED, DISCLOSED TO  
OTHERS OR USED IN  
MANUFACTURE OF THE SUBJECT  
MATTER THEREOF WITHOUT  
WRITTEN CONSENT OF  
PANDEMIC HAUNT PRODUCTION

Pandemic Haunt Production LLC

Shoulder Bar "C"

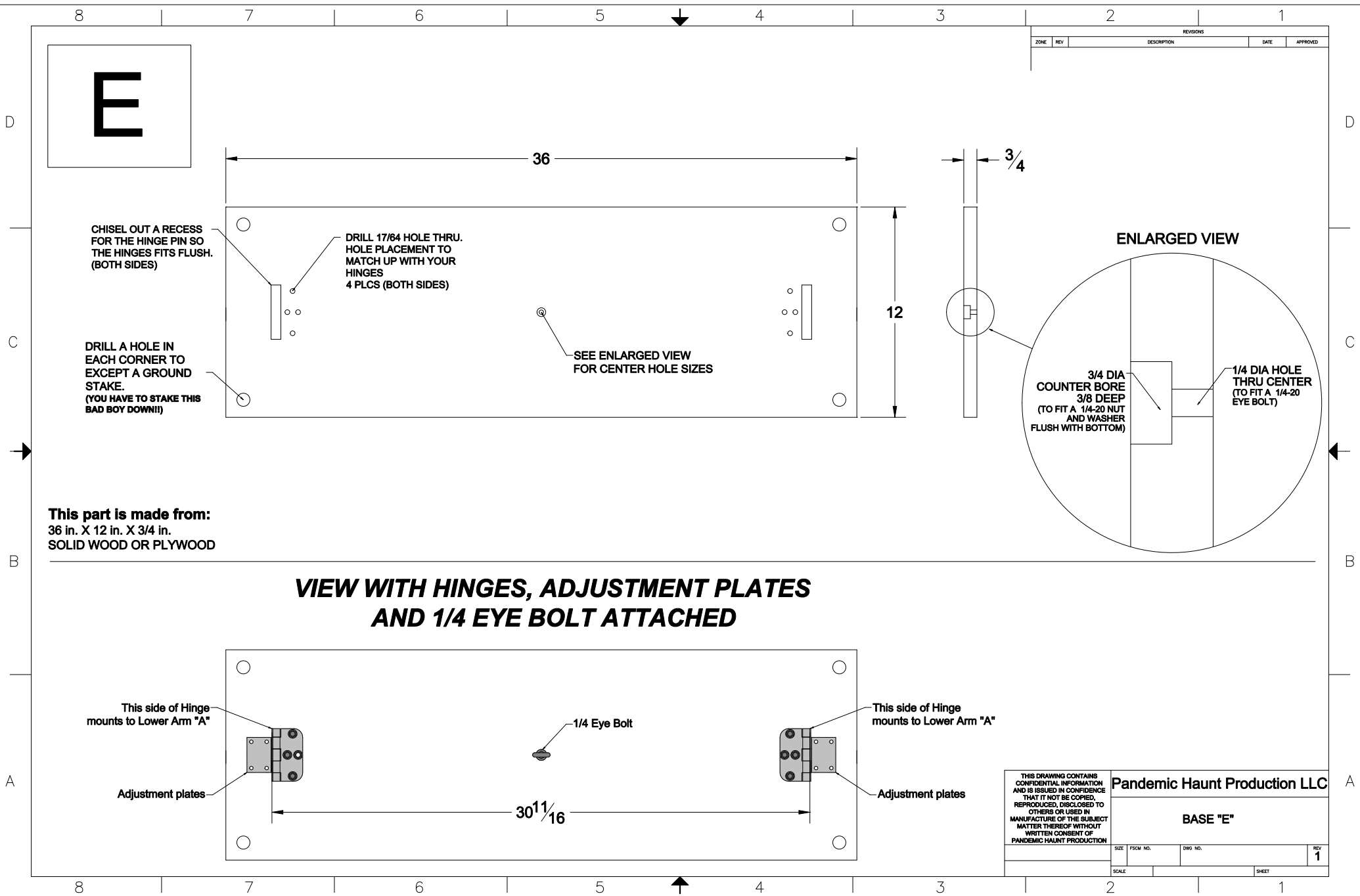
SIZE	FSCM NO.	DWG NO.	REV <b>1</b>
SCALE		SHEET	

D



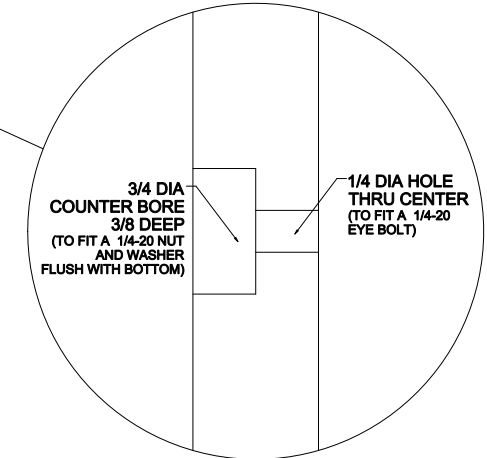
**This part is made from:**  
1in X 1in X 1/16 wall thickness  
SQUARE TUBE STEEL

THIS DRAWING CONTAINS CONFIDENTIAL INFORMATION AND IS ISSUED IN CONFIDENCE THAT IT NOT BE COPIED, REPRODUCED, DISCLOSED TO OTHERS OR USED IN MANUFACTURE OF THE SUBJECT MATTER THEREOF WITHOUT WRITTEN CONSENT OF PANDEMIC HAUNT PRODUCTION				Pandemic Haunt Production LLC			
				Head Bar "D"			
SIZE		FSCM NO.		DWG NO.		REV	
						1	
SCALE				SHEET			



E

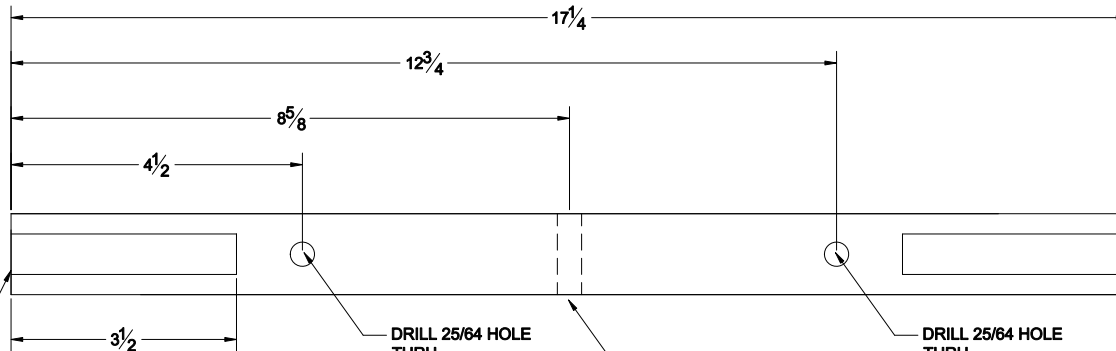
REVISIONS				
ZONE	REV	DESCRIPTION	DATE	APPROVED



THIS DRAWING CONTAINS CONFIDENTIAL INFORMATION AND IS ISSUED IN CONFIDENCE THAT IT NOT BE COPIED, REPRODUCED, DISCLOSED TO OTHERS OR USED IN MANUFACTURE OF THE SUBJECT MATTER THEREOF WITHOUT WRITTEN CONSENT OF PANDEMIC HAUNT PRODUCTION				
Pandemic Haunt Production LLC				
BASE "E"				
SIZE	FSCM NO.	DWG NO.	REV	1
SCALE			SHEET	

F

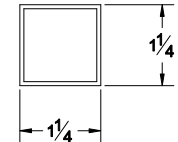
CUT A 5/8 WIDE SLOT, 3 1/2 FROM THE END, THRU **ONE SIDE** OF THE TUBE.  
THIS SLOT IS FOR THE HINGE HARDWARE TO SLIDE IN AND OUT WITHOUT HITTING THE UPPER SHOULDER BAR.  
(ONE SLOT EACH END)



DRILL 25/64 HOLE THRU BOTH SIDES OF TUBE (1 HOLE THIS SIDE)

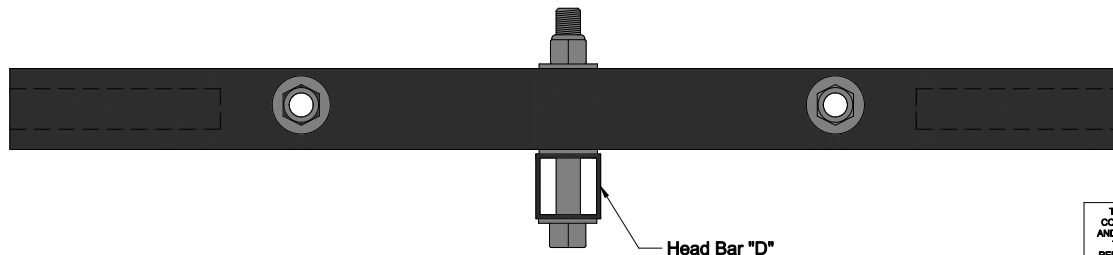
DRILL 25/64 HOLE THRU BOTH SIDES OF TUBE OPPOSITE FACE OF SLOTS (1 HOLE IN CENTER)

DRILL 25/64 HOLE THRU BOTH SIDES OF TUBE (1 HOLE STHIS SIDE)



**This part is made from:**  
1 1/4in X 1 1/4in X 1/16 wall thickness  
SQUARE TUBE STEEL

**VIEW WITH HEAD BAR "D" ATTACHED**



Head Bar "D"

THIS DRAWING CONTAINS CONFIDENTIAL INFORMATION AND IS ISSUED IN CONFIDENCE THAT IT NOT BE COPIED, REPRODUCED, DISCLOSED TO OTHERS OR USED IN MANUFACTURE OF THE SUBJECT MATTER THEREOF WITHOUT WRITTEN CONSENT OF PANDEMIC HAUNT PRODUCTION				Pandemic Haunt Production LLC			
				Upper Soulder Bar "F"			
SIZE	FSCM NO.	DWG NO.	REV	SCALE	SHEET		
			1				

# AIR CYLINDER ASSEMBLY

**PIVOT BRACKET**  
ONE PIECE WITH PIN  
1/4 Hole with 3/8 Opening  
SKU # 0776-0380  
(FRIGHTPROPS.COM)

**SPHERICAL ROD END**  
1/4-28 THREAD  
SKU# 0582-0022  
(FRIGHTPROPS.COM)

**CYLINDER**  
3/4 BORE  
3" STROKE  
DOUBLE ACTING  
UNIVERSAL MOUNT  
SKU # 0758-0750-3  
(FRIGHTPROPS.COM)

**USE HARDWARE (#3)**  
TO ATTACH FOOT BRACKETS TO  
LOWER ARMS "A" AND  
UPPER ARMS "B"

THIS DRAWING CONTAINS CONFIDENTIAL INFORMATION AND IS ISSUED IN CONFIDENCE THAT IT NOT BE COPIED, REPRODUCED, DISCLOSED TO OTHERS OR USED IN MANUFACTURE OF THE SUBJECT MATTER THEREOF WITHOUT WRITTEN CONSENT OF PANDEMIC HAUNT PRODUCTION		Pandemic Haunt Production LLC	
		AIR CYLINDER ASSEMBLY	
		SIZE	FSCM NO.
		DWG NO.	REV 1
SCALE		SHEET	

### HARDWARE (#1) (Need 1 set)

3/8-16 HEX  
HEAD BOLT  
3 1/2in LONG

3/8 FLAT  
WASHER

3/8-16 NYLOCK NUT

### HARDWARE (#2) (Need 9 sets)

1/4-20 HEX  
HEAD BOLT  
1 1/2 in LONG

1/4 FLAT  
WASHER

1/4-20 NYLOCK NUT

### HARDWARE (#3) (Need 8 sets)

1/4-20 CAP  
HEAD BOLT  
1 1/2 in LONG

1/4 FLAT  
WASHER

1/4 HEX NUT

1/4 LOCK  
WASHER

### HARDWARE (#4) (Need 1 set)

1/4-20 EYE BOLT  
2 5/8in LONG  
FROM TOP OF EYE  
TO BOTTOM OF THREAD.  
1in OF THREAD MINIMUM

1/4 FLAT WASHER

1/4 HEX NUT

1/4-20 NYLOCK NUT

### HARDWARE (#5) (Need 20 sets)

1/4-20 HEX  
HEAD BOLT  
2 in LONG

1/4 FLAT WASHER

1/4-20 HEX  
NUT

1/4 LOCK WASHER

### HARDWARE (#6) (Need 2 sets)

3/8-16 HEX  
HEAD BOLT  
3 1/2in LONG

3/8 FLAT  
WASHER

3/8-16  
NYLOCK NUT

THIS DRAWING CONTAINS  
CONFIDENTIAL INFORMATION  
AND IS ISSUED IN CONFIDENCE  
THAT IT NOT BE COPIED,  
REPRODUCED, DISCLOSED TO  
OTHERS OR USED IN  
MANUFACTURE OF THE SUBJECT  
MATTER THEREOF WITHOUT  
WRITTEN CONSENT OF  
PANDEMIC HAUNT PRODUCTION

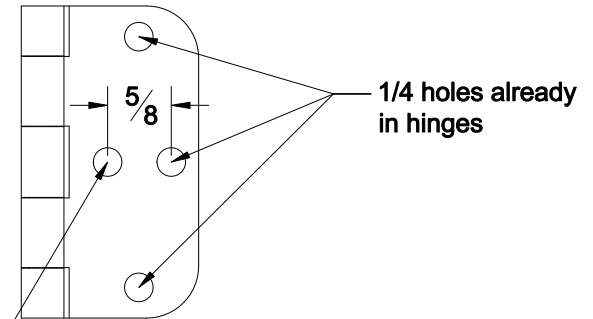
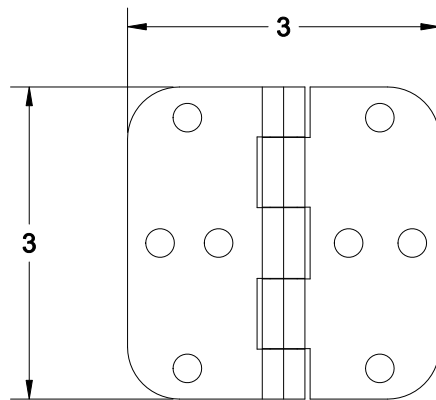
Pandemic Haunt Production LLC

HARDWARE

SIZE	FSCM NO.	DWG NO.	REV 1
SCALE		SHEET	

# HINGE DESCRIPTION

Here is the basic description of the 3 in hinges that were used in these plans. It may be hard to find these exact hinges, but you should be able to find hinges that closely match the overall length and width of the description. Try to use the strongest hinge you can find in this size. It is not a problem if the style and hole placement are different. You will have to add a hole on each side of the hinge anyway, so drill the mounting holes in your mechanism to correspond to the hole in your hinges.



Drill 1/4 hole in this position.  
(both sides)

THIS DRAWING CONTAINS CONFIDENTIAL INFORMATION AND IS ISSUED IN CONFIDENCE THAT IT NOT BE COPIED, REPRODUCED, DISCLOSED TO OTHERS OR USED IN MANUFACTURE OF THE SUBJECT MATTER THEREOF WITHOUT WRITTEN CONSENT OF PANDEMIC HAUNT PRODUCTION		Pandemic Haunt Production LLC	
		HINGE DESCRIPTION	
		SIZE	FSQM NO.
		DWG NO.	REV 1
SCALE		SHEET	

# BUNGEE CORD DESCRIPTION

YOU WILL **NOT** FIND A BUNGEE CORD THAT IS 7 5/8in LONG. YOU WILL HAVE TO BUY A LONGER CORD AND CUT IT DOWN. I RECOMMEND A BUNGEE CORD WITH METAL HOOK ENDS NOT PLASTIC. YOU CAN ADJUST THE CORD LENGTH BY SLIDING THE HOOK DOWN, CUT THE CORD TO THE EXACT LENGTH, TIE A KNOT IN THE CORD END AND SLIDE THE HOOK BACK UP. YOU CAN USE ADJUSTABLE CORDS BUT MOST OF THE TIME THE HOOKS ARE PLASTIC AND CAN NOT BE BENT AROUND THE HARDWARE FOR A SECURE FIT.

BUNGEE CORD  
IN RELAXED POSITION

7 5/8

BEND THE HOOKS ON BOTH ENDS AROUND THE HARDWARE AFTER YOU ASSEMBLE THE MECHANISM. THIS WILL KEEP THE CORDS FROM COMING OFF DURING THE VIOLENT JERKING MOTION.

THIS DRAWING CONTAINS  
CONFIDENTIAL INFORMATION  
AND IS ISSUED IN CONFIDENCE  
THAT IT NOT BE COPIED,  
REPRODUCED, DISCLOSED TO  
OTHERS OR USED IN  
MANUFACTURE OF THE SUBJECT  
MATTER THEREOF WITHOUT  
WRITTEN CONSENT OF  
PANDEMIC HAUNT PRODUCTION

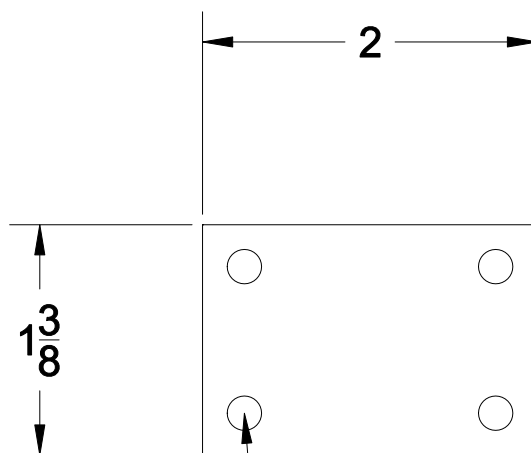
Pandemic Haunt Production LLC

BUNGEE CORD  
DESCRIPTION

SIZE	FSCM NO.	DWG NO.	REV
			1
SCALE		SHEET	

# ADJUSTMENT PLATES

THESE DOUBLE-WIDE MENDING PLATES CAN BE USED TO ADJUST THE TOTAL SIDE TO SIDE MOVEMENT OF THE MECHANISM. IF YOU WISH TO HAVE A LOT OF SIDE TO SIDE MOVEMENT, USE ONLY ONE PLATE EACH SIDE. IF YOU WANT LESS SIDE TO SIDE MOVEMENT AND MORE UP AND DOWN, USE MORE PLATES. KEEP ADDING PLATES TILL YOU GET YOUR DESIRED MOVEMENT. MAXIMUM NUMBER OF PLATES EACH SIDE IS 6..



7/32 HOLES  
IN THE CORNERS  
(4 PLACES)

DOUBLE-WIDE  
MENDING PLATES  
HOME DEPOT P/N 527 626  
MADE BY : EVERBILT  
(OR USE SOMETHING CLOSE)

THIS DRAWING CONTAINS CONFIDENTIAL INFORMATION AND IS ISSUED IN CONFIDENCE THAT IT NOT BE COPIED, REPRODUCED, DISCLOSED TO OTHERS OR USED IN MANUFACTURE OF THE SUBJECT MATTER THEREOF WITHOUT WRITTEN CONSENT OF PANDEMIC HAUNT PRODUCTION				Pandemic Haunt Production LLC			
				ADJUSTMENT PLATES			
SIZE	FSCM NO.	DWG NO.	REV	SCALE	SHEET		
			1				